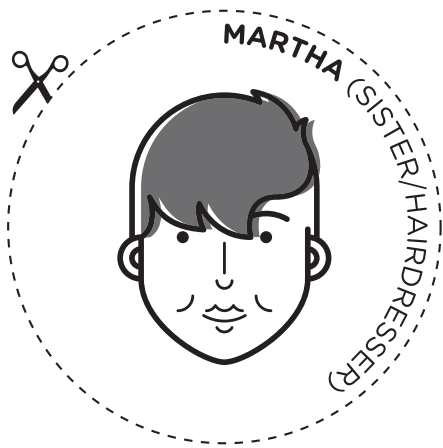


Circle of Support

The Game

Instructions

1. Wait for the teacher to read out one of the scenarios.
2. Cut out the characters you think would be helpful in the particular scenario.
3. Place the cut-out characters around the Circle of Support in the appropriate place of your choice and discuss your decision.



Martha (Sister)

Hairstylist

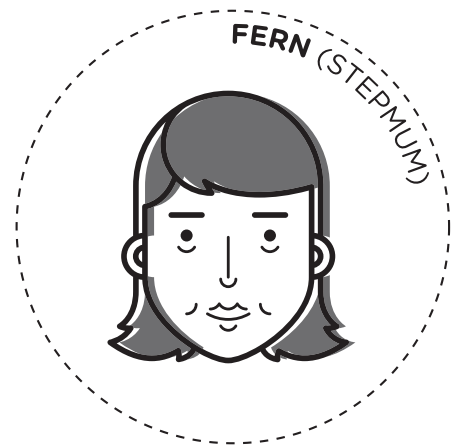
She recently opened her own salon. She's brilliant at her job – and knows everybody.



Freddy (Granddad)

Retired Police Officer

Lovely man. In his 70s and still rides a motorbike.



Fern (Stepmum)

Legal secretary

Works part time at a big law firm in town. Makes the best cup cakes ever.



Max (Big brother)

Army medic

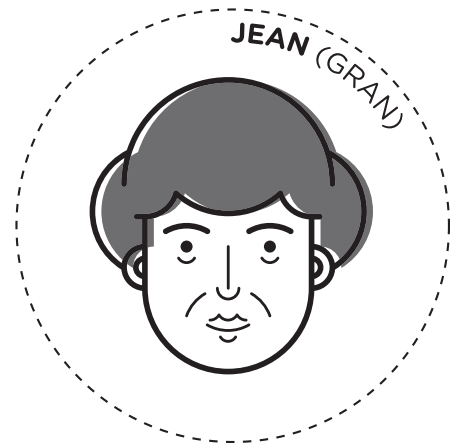
Not home on leave as often as Donnie would like, but when he is they have the best time.



Frank (Dad)

Local Councillor

He has been serving the local community as an independent councillor for over twenty years. Before that he was a paramedic.



Jean (Gran)

Best woman ever

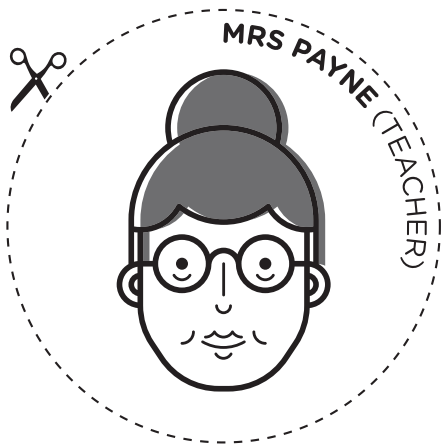
Loves detective programmes and line dancing. Does volunteer work in a charity shop three days a week

Circle of Support

The Game

Instructions

1. Wait for the teacher to read out one of the scenarios.
2. Cut out the characters you think would be helpful in the particular scenario.
3. Place the cut-out characters around the Circle of Support in the appropriate place of your choice and discuss your decision.



Mrs Payne

Modern Studies Teacher
Nicest teacher in the school.



Mr Presley

Pastoral Care
Always there if we need to talk.



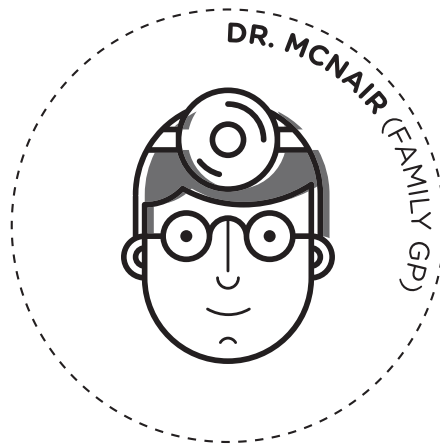
Mrs Steal

School nurse
Always really kind.



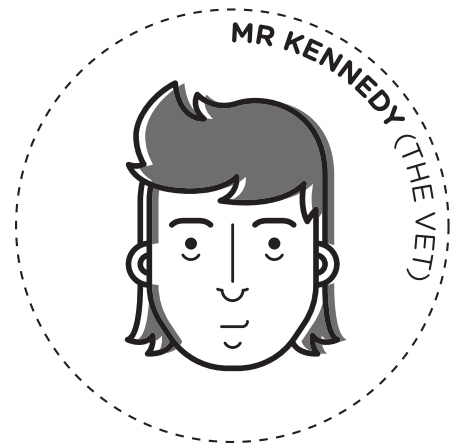
Miss Janowski

School office
Mad hair but lovely lady.



Dr. McNair

Family GP
Knows all the family.
Great doctor.



Mr. Kennedy

The Vet
Loves animals and is a good listener.

Circle of Support

The Game

Instructions

1. Wait for the teacher to read out one of the scenarios.
2. Cut out the characters you think would be helpful in the particular scenario.
3. Place the cut-out characters around the Circle of Support in the appropriate place of your choice and discuss your decision.



Mrs Ritchie

The Dentist

Makes perfect smiles.



Mr. Hari

Shopkeeper

Very friendly. Helps older people with their shopping.



Andrea

Librarian

Knows loads of stuff about books and the local community.



Marcus

Swimming Instructor

Health and fitness expert.



Lorna

Driving Instructor

What she doesn't know about driving isn't worth knowing.



Pat

Lollipop man

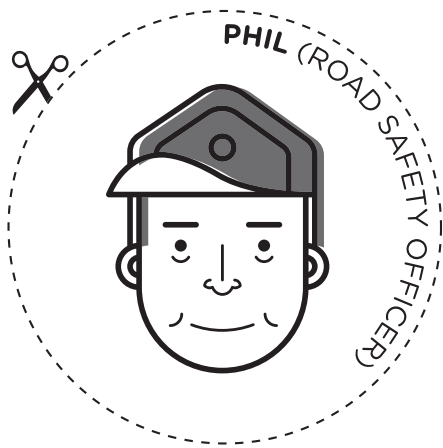
Always there, whatever the weather.

Circle of Support

The Game

Instructions

1. Wait for the teacher to read out one of the scenarios.
2. Cut out the characters you think would be helpful in the particular scenario.
3. Place the cut-out characters around the Circle of Support in the appropriate place of your choice and discuss your decision.



Phil

Road Safety Officer.



Family Lives

Family support.



Childline

0800 1111



Children1st

For Scotland's vulnerable children and families.



NSPCC

Child protection.

Including physical and psychological abuse at home, bullying and cyber-bullying.



Respectme

Help and advice if you're being bullied.

OUTER SUPPORT

INNER SUPPORT

CORE SUPPORT

